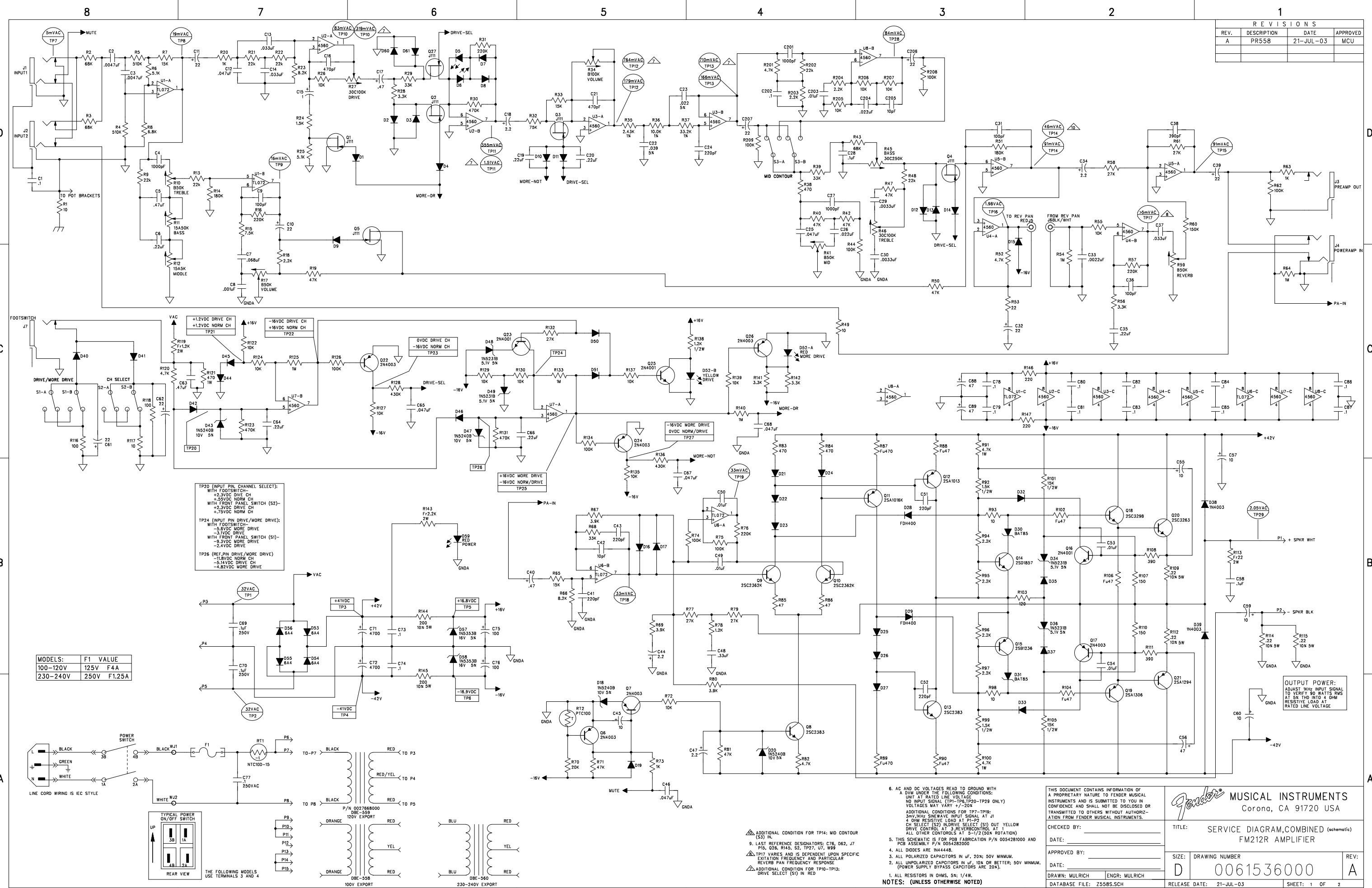
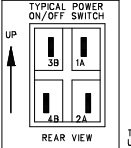
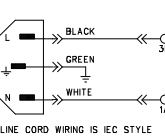


REVISIONS			
REV.	DESCRIPTION	DATE	APPROVED
A	PR558	21-JUL-03	MCU

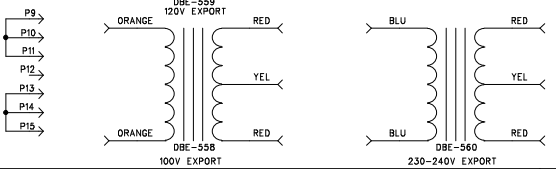


TP20 (INPUT PIN, CHANNEL SELECT):  
 WITH FOOTSWITCH: +2.3VDC DIVE CH, +3.5VDC NORM CH  
 WITH FRONT PANEL SWITCH (S2): +2.3VDC DIVE CH, +2.7VDC NORM CH  
 TP24 (INPUT PIN DRIVE/MORE DRIVE):  
 WITH FOOTSWITCH: +5.0VDC MORE DRIVE, -3.1VDC DIVE CH  
 WITH FRONT PANEL SWITCH (S1): -9.3VDC MORE DRIVE, -2.4VDC DIVE CH  
 TP26 (REF PIN DRIVE/MORE DRIVE):  
 +1.8VDC NORM CH, -5.14VDC DIVE CH, -4.82VDC MORE DRIVE

MODELS:	F1 VALUE
100-120V	125V F4A
230-240V	250V F1.25A



THE FOLLOWING MODELS USE TERMINALS 3 AND 4



- AC AND DC VOLTAGES READ TO GROUND WITH A DVM UNDER THE FOLLOWING CONDITIONS:  
 NO INPUT SIGNAL (TP1-TP6, TP20-TP29 ONLY)  
 VOLTAGES MAY VARY +/-20%  
 ADDITIONAL CONDITIONS FOR TP7-TP19:  
 50mV RMS SINEWAVE INPUT SIGNAL AT J1  
 2 OHM RESISTIVE LOAD AT P1-TP2  
 CH SELECT (S2) MORE DRIVE SELECT (S1) OUT YELLOW DRIVE CONTROL AT 3 REVERB CONTROL AT 1  
 ALL OTHER CONTROLS AT 5-1/2 (50K ROTATION)
- THIS SCHEMATIC IS FOR P08 FABRICATION P/N 005428000 AND PCB ASSEMBLY P/N 005428200
- ALL DIODES ARE IN4444B.
- ALL POLARIZED CAPACITORS IN uF, 20% 50V MINIMUM.
- ALL UNPOLARIZED CAPACITORS IN uF, 10% OR BETTER, 50V MINIMUM. (POWER SUPPLY BYPASS CAPACITORS ARE 20%).
- ALL RESISTORS IN OHMS, 5% 1/4W.

THIS DOCUMENT CONTAINS INFORMATION OF A PROPRIETARY NATURE TO FENDER MUSICAL INSTRUMENTS AND IS SUBMITTED TO YOU IN CONFIDENCE AND SHALL NOT BE DISCLOSED OR TRANSMITTED TO OTHERS WITHOUT AUTHORIZATION FROM FENDER MUSICAL INSTRUMENTS.

CHECKED BY: \_\_\_\_\_  
 DATE: \_\_\_\_\_  
 DRAWN: MULRICH ENGR: MULRICH  
 DATABASE FILE: 7558S.SCH

**Fender** MUSICAL INSTRUMENTS  
 Corona, CA 91720 USA

TITLE: SERVICE DIAGRAM, COMBINED (schematic)  
 FM212R AMPLIFIER

SIZE: DRAWING NUMBER  
 D 0061536000

REV: A

RELEASE DATE: 21-JUL-03 SHEET: 1 OF 2

OUTPUT POWER:  
 ADJUST W/RE INPUT SIGNAL TO VERIFY 90 WATTS RMS AT 5% THD INTO 4 OHM RESISTIVE LOAD AT RATED LINE VOLTAGE